

IVETH

INDUSTRIAL INTEGRATOR

Extracellular Vesicle and Nanovectors
Production, Engineering, and
Characterization for Therapy and Diagnosis

IVETH is the first expertise and technological innovation HUB for bioproduction, engineering, and characterization of extracellular vesicles (EVs) and nanovectors for early diagnosis and personalized therapy development.

Our ambition is to promote the industrialization of disruptive processes in healthcare.



IVETH has 15 years of experience in the field of EVs
14 equipments unique in Europe

A multidisciplinary team of 17 experts

A multimodal approach powered by AI

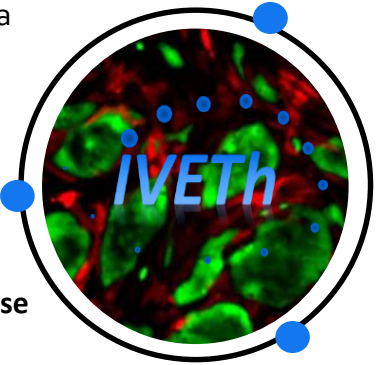
• Our main mission

Connect scientific and clinical project leaders with innovators within a large ecosystem of research labs, hospitals and companies.

Accelerate and de-risking technology maturity, market access and Impact for patients.

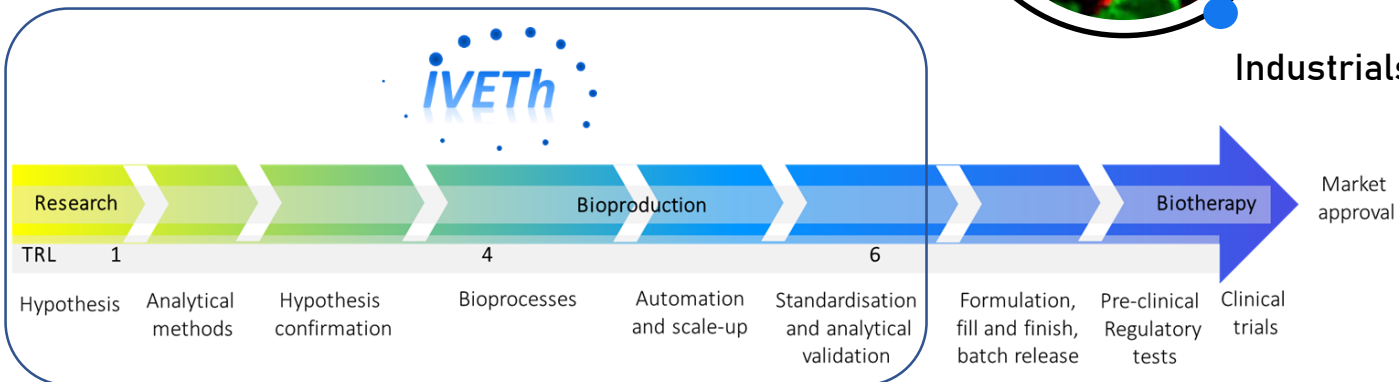
Clinicians

Academics



Industrials

An offer including all the steps prior to clinical batch production/release



STATE-OF-THE-ART EQUIPMENT

- Production
- Engineering
- Characterization



MULTIDISCIPLINARY TEAM

- Physicists, Chemists & Biologists
- Data scientists
- Pharmacists & Clinicians



ARTIFICIAL INTELLIGENCE

- Multimodal & Multiscale analyses
- Automated classification
- Data clustering

• Field of expertise

Bio-production,
Bio-engineering,
and Purification /
Isolation

Multimodale,
Multiscale
Characterization

Testing,
Visualization

Multimodale Machine
Learning Analyses



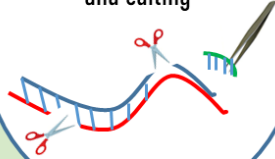
In Process Quality Control

ENGINEERING

Biophysical approaches for BIOPRODUCTION (spinner)

- Gene screening and editing

Gene screening and editing



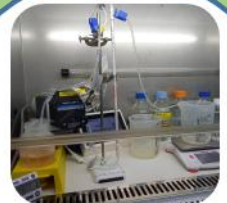
Ultracentrifugation Optima XE et Max, Beckman



EVs PURIFICATION from cell secretome, bioproduction or engineered EVs :

- Tangential Flow Filtration (TFF)
- Ultracentrifugation
- Ultrafiltration

Ultrafiltration, Millipore



Tangential Flow Filtration (TFF)

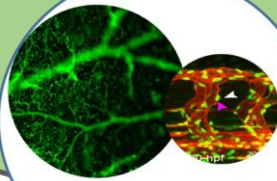
POTENCY TESTS

- High content screening microscopy Cell insight cx 7
- 4D organoid, *in ovo* models

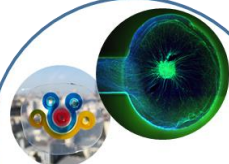


Cell insight CX7LZR (ThermoFisher)

Animal model / behavior



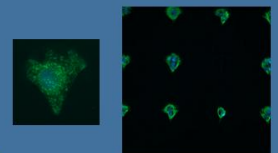
4D organoid / embryo



Thermoplastic microfluidic platform for fast prototyping

MICROFABRICATION / MICROFLUIDIC FACILITY

Micro patterning model



EV PHENOTYPING & BIOLOGICAL IDENTITY :

- Nanoparticle flow cytometry NanoFCM
- Exoview R100
- Single vesicle by Nanoscopy



Flow Nanoanalyzer (NanoFCM)

SINGLE VESICLE IMAGING TECHNIQUES : interaction with cells, cargo delivery, EV morphology

- Nanoscopy of single vesicles
- Atomic Force Microscope (AFM)



SAFe 360 (Abbelight)



MFP 3D-Asylum

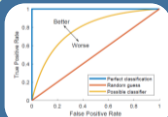
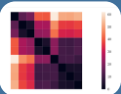


ExoView R100 (Nanoview)

MACHINE LEARNING METHODS

for quality control and biomarker discovery

- Supervised classification
- Automated clustering

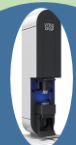


PHYSICAL CHARACTERIZATION by
Nanoparticle Tracking Analysis from
cell secretome, biofluids, bioproduction or
engineered EVs :

- Nanosight NS300
- Videodrop
- ZetaView



ZetaView
(Particle Metrix)



Videodrop
(Myriade)



DXR3xi
(Thermofisher)

EV FRACTIONNATION
from cell secretome, biofluids, bioproduction
or engineered EVs :

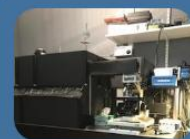
- Asymetric flow-field flow fractionation (AF4 Wyatt)
coupled with MALS, DLS, UV-Vis RI, Fluo detection



Eclipse + Dawn +
Optilab + Neon
(Wyatt)

RAMAN SPECTROSCOPY for
vesicle and biofluids
biomolecular characterization :

- Confocal Raman microspectroscopy for bulk
characterization
- Raman Tweezers Microspectroscopy (RTM) of
single extracellular vesicles (EVs)



Raman Tweezers
Microscopy

OFFERS

PARTNERSHIP

Shared intellectual property

CONSULTING & SERVICE CONTRACT

TRAINING & EDUCATION

Contact us

Email : iveth@u-paris-sciences.fr

Web site : www.iveth.u-paris.fr

LinkedIn : @IVETH



Université Paris Cité
Campus Saint-Germain

45 rue des Saints-Pères
75006, Paris, FRANCE